

### Treatment of Aortic Homograft Dysfunction with Transcatheter Aortic Valve Implantation in a Young Patient

The introduction of transcatheter aortic valve implantation (TAVI) has transformed the treatment of aortic stenosis in patients at high risk of operative mortality, although it has been limited almost exclusively to elderly patients. (1, 2) This procedure has been performed mostly on native valves, and occasionally on heterologous bioprosthetic heart valves (valve-in-valve). In many patients, aortic root homograft (AH), used for surgical aortic valve replacement principally in infective endocarditis, is often at risk for calcification and structural deterioration, requiring replacement within 15 years of surgery. Valve dysfunction of AH, together with coronary ostium and aortic root calcification, represents a major challenge for the cardiovascular team.

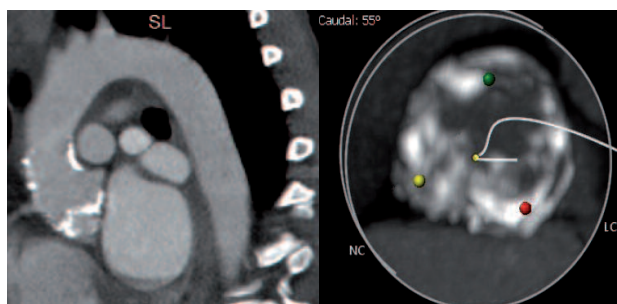
We describe the clinical case of a 24-year-old male patient with history of congenital aortic stenosis, undergoing aortic valve repair with balloon at the age of one month, and aortic valve replacement (AVR) with mechanical prosthesis at 13 years of age. Five months after that procedure, he presented with early prosthetic endocarditis requiring further surgery with AH implantation. In 2015, the patient suffered new prosthetic endocarditis caused by *Streptococcus* spp., for which he received medical treatment. During the following year, the patient presented with progressive dyspnea in functional class (FC) III-IV and had several admissions due to heart failure in the context of aortic valve disease, with left ventricular enlargement and progressive deterioration of systolic function. Chest CT angiography and transesophageal echocardiography showed severe degeneration and calcification of the AH, severe stenosis and aortic valve regurgitation, and two images consistent with aseptic vegetations. The patient was considered inoperable in another medical center and cardiac transplantation was suggested, which was rejected by the patient and his family. The patient was evaluated by the interdisciplinary cardiovascular team of our institution, which ruled out surgical AVR due to the high risk of a third reoperation (Euroscore II 10.5%, STS 30.4%) and extended calcification of the homograft. A transfemoral TAVI was therefore decided using a repositionable self-expanding valve. Given the patient's small body structure and small femoral arteries, implantation with a 23 mm Lotus™ Valve System (Boston Scientific™) under general anesthesia and without predilatation was the preferred option. Echocardiographic parameters and symptoms improved immediately after the operation; the patient progressed with no postoperative complications, and was discharged 48 hours after

the procedure. At the 6-month follow up, the patient remains asymptomatic, with good exercise tolerance (FC I), no signs of pump failure and echocardiographic improved left ventricular function, normal valve function, and absence of paravalvular leak.

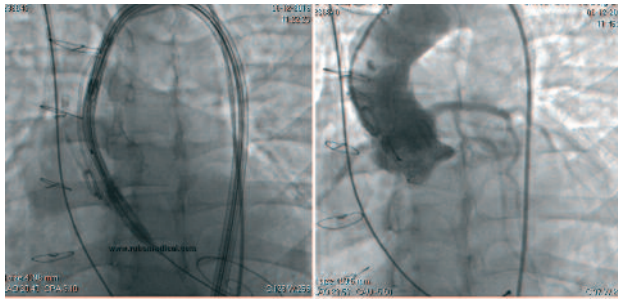
Surgical aortic root and valve homograft implantation is used mainly in cases of extended endocarditis of the valve with root destruction. Structural deterioration of the AH is the main reason for reoperation. According to the different series, the rate of repeat intervention at 10 years in patients below 20 years of age is almost 20 times greater than in patients aged over 65 years. (3) Calcification is the major structural alteration causing AH dysfunction, both of the aortic root and leaflets. As a result, insufficiency and/or aortic valve stenosis often occur, and conventional surgery is the treatment of choice. Reoperation is a complex and atypical procedure with high technical difficulty, resulting in approximately 50% morbidity rate. However, surgical risk can be reduced with new technologies like TAVI or sutureless aortic valve replacement. (4) The latter option was not feasible for our patient because we did not have the Perceval Sorin™ System (sutureless valve with minimal surgical approach and short cardiopulmonary bypass times) available in our country.

Although the experience is limited, small series of patients with AH dysfunction and high surgical risk, which have been safely and efficiently treated with TAVI, have been reported to date. In most cases, a CoreValve was used. (5) The uniqueness of the present case lies in the indication of TAVI with a Lotus™ valve in a young patient who had AH dysfunction due to severe stenosis and insufficiency, with a history of two previous surgeries and porcelain aorta.

Some technical aspects of the procedure should be considered. A series of previous and intraprocedural assessments are necessary to adapt the TAVI technique used for aortic stenosis. CT angiography is



**Fig. 1.** Left, CT angiography showing severe homograft calcification, including annulus and valve. Right, cross sectional images of aortic valve calcifications.



**Fig. 2.** Implantation through the left femoral artery showing the temporary pacemaker in the right ventricle and the 23 mm Lotus™ Valve System (Boston Scientific). No transvalvular gradient or aortic regurgitation were recorded in the angiogram.

very valuable for correct AH assessment, particularly its degree of calcification and the implantation area where the prosthesis will be fixed. Moreover, it allows establishing the anatomy and angulation of the aortic root, and its association with both coronary ostia, or the presence of bypass. (6) It is also important to assess the region of anastomosis with the ascending aorta, which can be stenotic or restrictive, hampering an appropriate expansion of the prosthetic valve. (3) Measuring valve annulus is of vital importance when choosing the size of the prosthesis to reduce the risk of significant paravalvular regurgitation (Figure 1). It should be taken into account that the degeneration of the AH may cause anatomical distortion and aortic root dilation. In case of aortic regurgitation, balloon dilation prior to implantation should not be performed because it may cause aortic insufficiency and acute hemodynamic deterioration. Correct positioning and deployment of the prosthetic valve are a challenge due to few anatomic landmarks in the fluoroscopy image and to severe valve regurgitation causing device instability. Transesophageal echocardiography is used to guide the positioning of the valve, and it is often supplemented by contrast injections in the aortic root. Valve stability during deployment may be improved with rapid ventricular pacing to reduce pressure and regurgitant antegrade flow in each beat may increase (Figure 2). The risk of coronary ostia obstruction should be evaluated in each patient, which increases in case of low-lying, rigid coronary ostia and less capacious sinuses of Valsalva. (5)

The choice of a repositionable self-expanding Lotus™ prosthesis facilitated adequate positioning, hemodynamic stability during deployment, correct functioning since implantation, and minimal paravalvular regurgitation. Prosthesis repositioning was unnecessary in our patient. TAVI results at one-year follow-up with this type of prosthesis have been published, and show excellent valvular hemodynamics, absence of moderate or severe paravalvular regurgitation, and significant and sustained improvement of functional capacity, with good clinical outcome. It has also been associated with permanent pacing in 33% of the pa-

tients, which was not necessary in our case.

Surgery is the treatment of choice in case of AH failure, but in patients with extensive calcification, the only option is to remove and replace it. This type of surgery is technically challenging, with a significant morbidity and mortality rate. In this context, TAVI can be an option in high risk patients. Although long-term durability of TAVI devices is not well-known, we believe it is an option even for young patients when the risk for surgery is very high.

#### Conflicts of interest

None declared.

(See authors' conflicts of interest forms on the web/Supplementary material).

**Manuel Estigarribia, Mariela Toloso,  
Juan Álvarez Sevillano, Gustavo Ramos,  
Alejandro Cherro, José Luis Barisani**

Instituto Cardiovascular Adventista Clínica Adventista Belgrano.  
Buenos Aires, Argentina.  
Estomba 1710 (C1430EGF) Buenos Aires - Tel. 11-4436-0537  
e-mail: jlbarisani@gmail.com

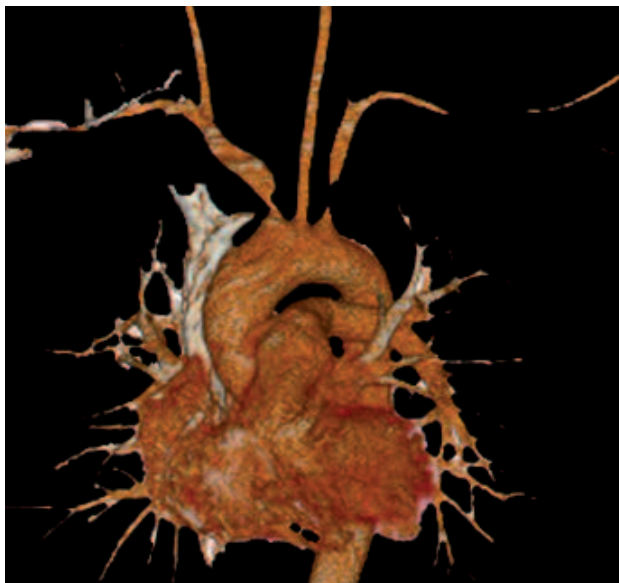
#### REFERENCES

1. Makkar RR, Fontana GP, Jilalawi H, Kapadia S, Pichard AD, Douglas PS, et al. Transcatheter aortic-valve replacement for inoperable severe aortic stenosis. *N Engl J Med* 2012;366:1696-704. <http://doi.org/2nd>
2. Mack M, Leon M, Smith C, Miller DC, Moses J, Tuzcu EM, et al. 5-year outcomes of transcatheter aortic valve replacement or surgical aortic valve replacement for high surgical risk patients with aortic stenosis (PARTNER 1): a randomised controlled trial. *Lancet* 2015;385:2477-84. <http://doi.org/f3g7wq>
3. López-Otero D, Teles R, Gomez-Hospital J, Balestrini C, Romaguera R, Saaibi-Solano J, et al. Implante percutáneo de válvula aórtica: seguridad y eficacia del tratamiento del homoinjerto aórtico disfuncionante. *Rev Esp Cardiol* 2012;65:350-5. <http://doi.org/f2fmmv>
4. Joudinaud TM, Baron F, Raffoul R, Pagis B, Vergnat M, Parisot C, et al. Redo aortic root surgery for failure of an aortic homograft is a major technical challenge. *Eur J Cardiothorac Surg* 2008;33:989-94. <http://doi.org/fdrncd>
5. Chan PH, Di Mario C, Davies SW, Kelleher A, Trimlett R, Moat N. Transcatheter aortic valve implantation in degenerate failing aortic homograft root replacements. *J Am Coll Cardiol* 2011;58:1729-30. <http://doi.org/cgcbbt>
6. Otalvaro L, Alfonso CE, O'Neill W, O'Neill B, Heldman A. Transfemoral aortic valve replacement in failing aortic root homografts. *J Card Surg* 2014;29:333-6. <http://doi.org/cc7q>

REV ARGENT CARDIOL 2017;85:367-368. <http://dx.doi.org/10.7775/rac.v85.i4.10961>

#### Retrospective Diagnosis of Takayasu's Arteritis from a ST-Segment Elevation Acute Coronary Syndrome

Takayasu's arteritis is a chronic idiopathic granulomatous vasculitis with a wide clinical variety, since it affects the aortic arch and its main branches. Its first description dates back to 1908 in Japan, where the highest incidence rates are reported today (1/3,000 inhabitants). In the West, its diagnosis is difficult because it is a rare condition, with an incidence of 1.2



**Fig. 1.** CT angiography with 3D reconstruction showing stenosis of the great vessels. Image at the time of diagnosis.

cases/1,000,000 inhabitants and an 8:1 female/male ratio.

We describe the case of a 37-year-old male patient with a history of hypertension since adolescence, smoking, dyslipidemia, sedentarism and prior hospitalization due to amaurosis fugax and right facial paresthesia interpreted as complex migraine.

The patient was admitted to our Department of Cardiology with a diagnosis of inferior ST-segment elevation acute coronary syndrome with electrical involvement of the right ventricle and Killip & Kimball A classification. Physical examination revealed right carotid and left subclavian murmur, asymmetric pulse in upper limbs, claudication and unrecordable blood pressure (BP) in the left upper limb, and differential BP of 20 mm Hg between upper and lower limbs.

Coronary angiography revealed a severe lesion in the proximal third of the anterior descending artery (ADA) and in its diagonal branch, moderate lesion in the proximal third of the circumflex artery (Cx) with significant lesion in its second lateral branch, and occlusive lesion in the mid-third of the right coronary artery (RCA), in which primary angioplasty with two stents was performed because it was considered the responsible artery.

Doppler echocardiography showed severe hypokinesis of the inferior left ventricular segments.

Due to the peculiar physical examination in a young patient, a CT angiography was performed, showing 52% stenosis in the brachiocephalic trunk (BCT) ostium, 77% in the left subclavian artery (LSA) and 38% in the superior mesenteric artery ostium (Figure 1).

As a result of these findings and of clinical suspi-

cion, the diagnosis of Takayasu's arteritis was made, based on the American College of Rheumatology (1) and Ishikawa's (2) criteria. (2) It was therefore decided, together with the Department of Rheumatology, to start treatment with intravenous methylprednisolone and then with cyclophosphamide. (3)

The patient had an asymptomatic course and continued on outpatient treatment.

A reduction in the percentage of the involved artery obstruction was observed during follow-up. Follow-up CT angiography revealed 47% stenosis in the BCT ostium, and 62.5% in the LSA (Figure 2). Coronary angiography after 6 months of treatment also showed reduction in the following lesions: moderate lesion in the proximal third of the ADA, non-significant lesion in the lateral branch of the Cx, and RCA without stenosis in mid-third stents.

At present, the patient remains asymptomatic and continues under follow-up.

The association between early atherosclerosis and common rheumatic diseases such as systemic lupus erythematosus and rheumatoid arthritis is well known; therefore, cardiac manifestations may occur first and the cardiologist may be the first specialist to evaluate these patients. However, since Takayasu's arteritis is a rare disease in Argentina, it is difficult to be diagnosed, and hence there is scarce local literature. According to the American College of Rheumatology, (1) the presence of at least three criteria has a sensitivity of 92.1% and a specificity of 97% to diagnose the disease. Our patient met 6/6 criteria for the diagnosis of Takayasu's arteritis. The relevance of our case is based on the fact that it is extremely rare in our ethnicity, and even rarer in men. Moreover, initial presentation of Takayasu's arteritis with acute myocardial infarction is absolutely unusual. (5)



**Fig. 2.** Follow-up CT angiography at 6 months of treatment.

**Conflicts of interest**

None declared.

(See authors' conflicts of interest forms on the web/Supplementary material).

**Gisela P. Cirone, Fernando Nazzetta,  
Gabriel M. Sumaya, Branimir M. Nadinica,  
Hernán E. Lewickia, Marcelo G. Masuelli**

Department of Cardiology,  
Complejo Médico Policial Churruca-Visca.  
Ciudad Autónoma de Buenos Aires  
e-mail: giselacirone21@hotmail.com

**REFERENCES**

1. Arend WP, Michel BA, Bloch DA, Hunder GG, Calabrese LH, Edworthy SM, et al. The American College of Rheumatology 1990

criteria for the classification of Takayasu arteritis. *Arthritis Rheum* 1990;33:1129-34. <http://doi.org/dh2dz8>

2. Ishikawa K. Diagnostic approach and proposed criteria for the clinical diagnosis of Takayasu's arteriopathy. *J Am Coll Cardiol* 1988;12:964-73. <http://doi.org/dt323>

3. Lacruz Pérez L. Granulomatosis de Wegener y arteritis de Takayasu. *An Pediatr (Barc)* 2005;62:271-6.

4. Cosacova R, Spadaro E, Villareal G. Accidente cerebrovascular como manifestación inicial de arteritis de Takayasu y revisión de casos en Argentina. *Neurol Arg* 2011;3:237-9. <http://doi.org/c8q3jm>

5. Villa-Forte A, Mandell BF. Cardiovascular disorders and rheumatic disease. *Rev Esp Cardiol* 2011;64:809-17. <http://doi.org/cxnffv>

---

REV ARGENT CARDIOL 2017;85:368-370. <http://dx.doi.org/10.7775/rac.v85.i4.10789>

---

## ICMJE Form for Disclosure of Potential Conflicts of Interest

### Instructions

The purpose of this form is to provide readers of your manuscript with information about your other interests that could influence how they receive and understand your work. The form is designed to be completed electronically and stored electronically. It contains programming that allows appropriate data display. Each author should submit a separate form and is responsible for the accuracy and completeness of the submitted information. The form is in six parts.

#### 1. Identifying information.

#### 2. The work under consideration for publication.

This section asks for information about the work that you have submitted for publication. The time frame for this reporting is that of the work itself, from the initial conception and planning to the present. The requested information is about resources that you received, either directly or indirectly (via your institution), to enable you to complete the work. Checking "No" means that you did the work without receiving any financial support from any third party -- that is, the work was supported by funds from the same institution that pays your salary and that institution did not receive third-party funds with which to pay you. If you or your institution received funds from a third party to support the work, such as a government granting agency, charitable foundation or commercial sponsor, check "Yes".

#### 3. Relevant financial activities outside the submitted work.

This section asks about your financial relationships with entities in the bio-medical arena that could be perceived to influence, or that give the appearance of potentially influencing, what you wrote in the submitted work. You should disclose interactions with ANY entity that could be considered broadly relevant to the work. For example, if your article is about testing an epidermal growth factor receptor (EGFR) antagonist in lung cancer, you should report all associations with entities pursuing diagnostic or therapeutic strategies in cancer in general, not just in the area of EGFR or lung cancer.

Report all sources of revenue paid (or promised to be paid) directly to you or your institution on your behalf over the 36 months prior to submission of the work. This should include all monies from sources with relevance to the submitted work, not just monies from the entity that sponsored the research. Please note that your interactions with the work's sponsor that are outside the submitted work should also be listed here. If there is any question, it is usually better to disclose a relationship than not to do so.

For grants you have received for work outside the submitted work, you should disclose support ONLY from entities that could be perceived to be affected financially by the published work, such as drug companies, or foundations supported by entities that could be perceived to have a financial stake in the outcome. Public funding sources, such as government agencies, charitable foundations or academic institutions, need not be disclosed. For example, if a government agency sponsored a study in which you have been involved and drugs were provided by a pharmaceutical company, you need only list the pharmaceutical company.

#### 4. Intellectual Property.

This section asks about patents and copyrights, whether pending, issued, licensed and/or receiving royalties.

#### 5. Relationships not covered above.

Use this section to report other relationships or activities that readers could perceive to have influenced, or that give the appearance of potentially influencing, what you wrote in the submitted work.

#### Definitions.

**Entity:** government agency, foundation, commercial sponsor, academic institution, etc.

**Grant:** A grant from an entity, generally [but not always] paid to your organization

**Personal Fees:** Monies paid to you for services rendered, generally honoraria, royalties, or fees for consulting, lectures, speakers bureaus, expert testimony, employment, or other affiliations

**Non-Financial Support:** Examples include drugs/equipment supplied by the entity, travel paid by the entity, writing assistance, administrative support, etc.

**Other:** Anything not covered under the previous three boxes

**Pending:** The patent has been filed but not issued

**Issued:** The patent has been issued by the agency

**Licensed:** The patent has been licensed to an entity, whether earning royalties or not

**Royalties:** Funds are coming in to you or your institution due to your patent

## ICMJE Form for Disclosure of Potential Conflicts of Interest

### Section 1. Identifying Information

1. Given Name (First Name)

José Luis

2. Surname (Last Name)

Barisani

3. Date

28-July-2017

4. Are you the corresponding author?

Yes

No

Corresponding Author's Name

Manuel Estigarribia

5. Manuscript Title

Tratamiento de la disfunción de homoinjerto  
aórtico en paciente joven mediante el implante

6. Manuscript Identifying Number (if you know it)

### Section 2. The Work Under Consideration for Publication

Did you or your institution **at any time** receive payment or services from a third party (government, commercial, private foundation, etc.) for any aspect of the submitted work (including but not limited to grants, data monitoring board, study design, manuscript preparation, statistical analysis, etc.)?

Are there any relevant conflicts of interest?

Yes

No

### Section 3. Relevant financial activities outside the submitted work.

Place a check in the appropriate boxes in the table to indicate whether you have financial relationships (regardless of amount of compensation) with entities as described in the instructions. Use one line for each entity; add as many lines as you need by clicking the "Add +" box. You should report relationships that were **present during the 36 months prior to publication**.

Are there any relevant conflicts of interest?

Yes

No

### Section 4. Intellectual Property -- Patents & Copyrights

Do you have any patents, whether planned, pending or issued, broadly relevant to the work?

Yes

No

## ICMJE Form for Disclosure of Potential Conflicts of Interest

---

### Section 5. Relationships not covered above

Are there other relationships or activities that readers could perceive to have influenced, or that give the appearance of potentially influencing, what you wrote in the submitted work?

- Yes, the following relationships/conditions/circumstances are present (explain below):
- No other relationships/conditions/circumstances that present a potential conflict of interest

At the time of manuscript acceptance, journals will ask authors to confirm and, if necessary, update their disclosure statements. On occasion, journals may ask authors to disclose further information about reported relationships.

### Section 6. Disclosure Statement

Based on the above disclosures, this form will automatically generate a disclosure statement, which will appear in the box below.

Dr. Barisani has nothing to disclose.

### Evaluation and Feedback

Please visit <http://www.icmje.org/cgi-bin/feedback> to provide feedback on your experience with completing this form.

## ICMJE Form for Disclosure of Potential Conflicts of Interest

### Instructions

The purpose of this form is to provide readers of your manuscript with information about your other interests that could influence how they receive and understand your work. The form is designed to be completed electronically and stored electronically. It contains programming that allows appropriate data display. Each author should submit a separate form and is responsible for the accuracy and completeness of the submitted information. The form is in six parts.

#### 1. Identifying information.

#### 2. The work under consideration for publication.

This section asks for information about the work that you have submitted for publication. The time frame for this reporting is that of the work itself, from the initial conception and planning to the present. The requested information is about resources that you received, either directly or indirectly (via your institution), to enable you to complete the work. Checking "No" means that you did the work without receiving any financial support from any third party -- that is, the work was supported by funds from the same institution that pays your salary and that institution did not receive third-party funds with which to pay you. If you or your institution received funds from a third party to support the work, such as a government granting agency, charitable foundation or commercial sponsor, check "Yes".

#### 3. Relevant financial activities outside the submitted work.

This section asks about your financial relationships with entities in the bio-medical arena that could be perceived to influence, or that give the appearance of potentially influencing, what you wrote in the submitted work. You should disclose interactions with ANY entity that could be considered broadly relevant to the work. For example, if your article is about testing an epidermal growth factor receptor (EGFR) antagonist in lung cancer, you should report all associations with entities pursuing diagnostic or therapeutic strategies in cancer in general, not just in the area of EGFR or lung cancer.

Report all sources of revenue paid (or promised to be paid) directly to you or your institution on your behalf over the 36 months prior to submission of the work. This should include all monies from sources with relevance to the submitted work, not just monies from the entity that sponsored the research. Please note that your interactions with the work's sponsor that are outside the submitted work should also be listed here. If there is any question, it is usually better to disclose a relationship than not to do so.

For grants you have received for work outside the submitted work, you should disclose support ONLY from entities that could be perceived to be affected financially by the published work, such as drug companies, or foundations supported by entities that could be perceived to have a financial stake in the outcome. Public funding sources, such as government agencies, charitable foundations or academic institutions, need not be disclosed. For example, if a government agency sponsored a study in which you have been involved and drugs were provided by a pharmaceutical company, you need only list the pharmaceutical company.

#### 4. Intellectual Property.

This section asks about patents and copyrights, whether pending, issued, licensed and/or receiving royalties.

#### 5. Relationships not covered above.

Use this section to report other relationships or activities that readers could perceive to have influenced, or that give the appearance of potentially influencing, what you wrote in the submitted work.

#### Definitions.

**Entity:** government agency, foundation, commercial sponsor, academic institution, etc.

**Grant:** A grant from an entity, generally [but not always] paid to your organization

**Personal Fees:** Monies paid to you for services rendered, generally honoraria, royalties, or fees for consulting, lectures, speakers bureaus, expert testimony, employment, or other affiliations

**Non-Financial Support:** Examples include drugs/equipment supplied by the entity, travel paid by the entity, writing assistance, administrative support, etc.

**Other:** Anything not covered under the previous three boxes

**Pending:** The patent has been filed but not issued

**Issued:** The patent has been issued by the agency

**Licensed:** The patent has been licensed to an entity, whether earning royalties or not

**Royalties:** Funds are coming in to you or your institution due to your patent

## ICMJE Form for Disclosure of Potential Conflicts of Interest

### Section 1. Identifying Information

1. Given Name (First Name)  
Alejandro

2. Surname (Last Name)  
Cherro

3. Date  
28-July-2017

4. Are you the corresponding author?  Yes  No

Corresponding Author's Name  
Manuel Estigarribia

5. Manuscript Title  
Tratamiento de la disfunción de homoinjerto  
aórtico en paciente joven mediante el implante

6. Manuscript Identifying Number (if you know it)

### Section 2. The Work Under Consideration for Publication

Did you or your institution **at any time** receive payment or services from a third party (government, commercial, private foundation, etc.) for any aspect of the submitted work (including but not limited to grants, data monitoring board, study design, manuscript preparation, statistical analysis, etc.)?

Are there any relevant conflicts of interest?  Yes  No

### Section 3. Relevant financial activities outside the submitted work.

Place a check in the appropriate boxes in the table to indicate whether you have financial relationships (regardless of amount of compensation) with entities as described in the instructions. Use one line for each entity; add as many lines as you need by clicking the "Add +" box. You should report relationships that were **present during the 36 months prior to publication**.

Are there any relevant conflicts of interest?  Yes  No

### Section 4. Intellectual Property -- Patents & Copyrights

Do you have any patents, whether planned, pending or issued, broadly relevant to the work?  Yes  No

## ICMJE Form for Disclosure of Potential Conflicts of Interest

---

### Section 5. Relationships not covered above

Are there other relationships or activities that readers could perceive to have influenced, or that give the appearance of potentially influencing, what you wrote in the submitted work?

- Yes, the following relationships/conditions/circumstances are present (explain below):
- No other relationships/conditions/circumstances that present a potential conflict of interest

At the time of manuscript acceptance, journals will ask authors to confirm and, if necessary, update their disclosure statements. On occasion, journals may ask authors to disclose further information about reported relationships.

### Section 6. Disclosure Statement

Based on the above disclosures, this form will automatically generate a disclosure statement, which will appear in the box below.

Dr. Cherro has nothing to disclose.

### Evaluation and Feedback

Please visit <http://www.icmje.org/cgi-bin/feedback> to provide feedback on your experience with completing this form.

## ICMJE Form for Disclosure of Potential Conflicts of Interest

### Instructions

The purpose of this form is to provide readers of your manuscript with information about your other interests that could influence how they receive and understand your work. The form is designed to be completed electronically and stored electronically. It contains programming that allows appropriate data display. Each author should submit a separate form and is responsible for the accuracy and completeness of the submitted information. The form is in six parts.

#### 1. Identifying information.

#### 2. The work under consideration for publication.

This section asks for information about the work that you have submitted for publication. The time frame for this reporting is that of the work itself, from the initial conception and planning to the present. The requested information is about resources that you received, either directly or indirectly (via your institution), to enable you to complete the work. Checking "No" means that you did the work without receiving any financial support from any third party -- that is, the work was supported by funds from the same institution that pays your salary and that institution did not receive third-party funds with which to pay you. If you or your institution received funds from a third party to support the work, such as a government granting agency, charitable foundation or commercial sponsor, check "Yes".

#### 3. Relevant financial activities outside the submitted work.

This section asks about your financial relationships with entities in the bio-medical arena that could be perceived to influence, or that give the appearance of potentially influencing, what you wrote in the submitted work. You should disclose interactions with ANY entity that could be considered broadly relevant to the work. For example, if your article is about testing an epidermal growth factor receptor (EGFR) antagonist in lung cancer, you should report all associations with entities pursuing diagnostic or therapeutic strategies in cancer in general, not just in the area of EGFR or lung cancer.

Report all sources of revenue paid (or promised to be paid) directly to you or your institution on your behalf over the 36 months prior to submission of the work. This should include all monies from sources with relevance to the submitted work, not just monies from the entity that sponsored the research. Please note that your interactions with the work's sponsor that are outside the submitted work should also be listed here. If there is any question, it is usually better to disclose a relationship than not to do so.

For grants you have received for work outside the submitted work, you should disclose support ONLY from entities that could be perceived to be affected financially by the published work, such as drug companies, or foundations supported by entities that could be perceived to have a financial stake in the outcome. Public funding sources, such as government agencies, charitable foundations or academic institutions, need not be disclosed. For example, if a government agency sponsored a study in which you have been involved and drugs were provided by a pharmaceutical company, you need only list the pharmaceutical company.

#### 4. Intellectual Property.

This section asks about patents and copyrights, whether pending, issued, licensed and/or receiving royalties.

#### 5. Relationships not covered above.

Use this section to report other relationships or activities that readers could perceive to have influenced, or that give the appearance of potentially influencing, what you wrote in the submitted work.

#### Definitions.

**Entity:** government agency, foundation, commercial sponsor, academic institution, etc.

**Grant:** A grant from an entity, generally [but not always] paid to your organization

**Personal Fees:** Monies paid to you for services rendered, generally honoraria, royalties, or fees for consulting, lectures, speakers bureaus, expert testimony, employment, or other affiliations

**Non-Financial Support:** Examples include drugs/equipment supplied by the entity, travel paid by the entity, writing assistance, administrative support, etc.

**Other:** Anything not covered under the previous three boxes

**Pending:** The patent has been filed but not issued

**Issued:** The patent has been issued by the agency

**Licensed:** The patent has been licensed to an entity, whether earning royalties or not

**Royalties:** Funds are coming in to you or your institution due to your patent

## ICMJE Form for Disclosure of Potential Conflicts of Interest

### Section 1. Identifying Information

1. Given Name (First Name)  
Manuel

2. Surname (Last Name)  
Estigarribia

3. Date  
28-July-2017

4. Are you the corresponding author?  Yes  No

5. Manuscript Title  
Tratamiento de la disfunción de homoinjerto  
aórtico en paciente joven mediante el implante  
6. Manuscript Identifying Number (if you know it)

### Section 2. The Work Under Consideration for Publication

Did you or your institution **at any time** receive payment or services from a third party (government, commercial, private foundation, etc.) for any aspect of the submitted work (including but not limited to grants, data monitoring board, study design, manuscript preparation, statistical analysis, etc.)?

Are there any relevant conflicts of interest?  Yes  No

### Section 3. Relevant financial activities outside the submitted work.

Place a check in the appropriate boxes in the table to indicate whether you have financial relationships (regardless of amount of compensation) with entities as described in the instructions. Use one line for each entity; add as many lines as you need by clicking the "Add +" box. You should report relationships that were **present during the 36 months prior to publication**.

Are there any relevant conflicts of interest?  Yes  No

### Section 4. Intellectual Property -- Patents & Copyrights

Do you have any patents, whether planned, pending or issued, broadly relevant to the work?  Yes  No

## ICMJE Form for Disclosure of Potential Conflicts of Interest

---

### Section 5. Relationships not covered above

Are there other relationships or activities that readers could perceive to have influenced, or that give the appearance of potentially influencing, what you wrote in the submitted work?

- Yes, the following relationships/conditions/circumstances are present (explain below):
- No other relationships/conditions/circumstances that present a potential conflict of interest

At the time of manuscript acceptance, journals will ask authors to confirm and, if necessary, update their disclosure statements. On occasion, journals may ask authors to disclose further information about reported relationships.

### Section 6. Disclosure Statement

Based on the above disclosures, this form will automatically generate a disclosure statement, which will appear in the box below.

Dr. Estigarribia has nothing to disclose.

### Evaluation and Feedback

Please visit <http://www.icmje.org/cgi-bin/feedback> to provide feedback on your experience with completing this form.

## ICMJE Form for Disclosure of Potential Conflicts of Interest

### Instructions

The purpose of this form is to provide readers of your manuscript with information about your other interests that could influence how they receive and understand your work. The form is designed to be completed electronically and stored electronically. It contains programming that allows appropriate data display. Each author should submit a separate form and is responsible for the accuracy and completeness of the submitted information. The form is in six parts.

#### 1. Identifying information.

#### 2. The work under consideration for publication.

This section asks for information about the work that you have submitted for publication. The time frame for this reporting is that of the work itself, from the initial conception and planning to the present. The requested information is about resources that you received, either directly or indirectly (via your institution), to enable you to complete the work. Checking "No" means that you did the work without receiving any financial support from any third party -- that is, the work was supported by funds from the same institution that pays your salary and that institution did not receive third-party funds with which to pay you. If you or your institution received funds from a third party to support the work, such as a government granting agency, charitable foundation or commercial sponsor, check "Yes".

#### 3. Relevant financial activities outside the submitted work.

This section asks about your financial relationships with entities in the bio-medical arena that could be perceived to influence, or that give the appearance of potentially influencing, what you wrote in the submitted work. You should disclose interactions with ANY entity that could be considered broadly relevant to the work. For example, if your article is about testing an epidermal growth factor receptor (EGFR) antagonist in lung cancer, you should report all associations with entities pursuing diagnostic or therapeutic strategies in cancer in general, not just in the area of EGFR or lung cancer.

Report all sources of revenue paid (or promised to be paid) directly to you or your institution on your behalf over the 36 months prior to submission of the work. This should include all monies from sources with relevance to the submitted work, not just monies from the entity that sponsored the research. Please note that your interactions with the work's sponsor that are outside the submitted work should also be listed here. If there is any question, it is usually better to disclose a relationship than not to do so.

For grants you have received for work outside the submitted work, you should disclose support ONLY from entities that could be perceived to be affected financially by the published work, such as drug companies, or foundations supported by entities that could be perceived to have a financial stake in the outcome. Public funding sources, such as government agencies, charitable foundations or academic institutions, need not be disclosed. For example, if a government agency sponsored a study in which you have been involved and drugs were provided by a pharmaceutical company, you need only list the pharmaceutical company.

#### 4. Intellectual Property.

This section asks about patents and copyrights, whether pending, issued, licensed and/or receiving royalties.

#### 5. Relationships not covered above.

Use this section to report other relationships or activities that readers could perceive to have influenced, or that give the appearance of potentially influencing, what you wrote in the submitted work.

#### Definitions.

**Entity:** government agency, foundation, commercial sponsor, academic institution, etc.

**Grant:** A grant from an entity, generally [but not always] paid to your organization

**Personal Fees:** Monies paid to you for services rendered, generally honoraria, royalties, or fees for consulting, lectures, speakers bureaus, expert testimony, employment, or other affiliations

**Non-Financial Support:** Examples include drugs/equipment supplied by the entity, travel paid by the entity, writing assistance, administrative support, etc.

**Other:** Anything not covered under the previous three boxes

**Pending:** The patent has been filed but not issued

**Issued:** The patent has been issued by the agency

**Licensed:** The patent has been licensed to an entity, whether earning royalties or not

**Royalties:** Funds are coming in to you or your institution due to your patent

## ICMJE Form for Disclosure of Potential Conflicts of Interest

### Section 1. Identifying Information

1. Given Name (First Name)  
Gustavo

2. Surname (Last Name)  
Ramos

3. Date  
28-July-2017

4. Are you the corresponding author?  Yes  No

Corresponding Author's Name  
Manuel Estigarribia

5. Manuscript Title  
Tratamiento de la disfunción de homoinjerto  
aórtico en paciente joven mediante el implante

6. Manuscript Identifying Number (if you know it)

### Section 2. The Work Under Consideration for Publication

Did you or your institution **at any time** receive payment or services from a third party (government, commercial, private foundation, etc.) for any aspect of the submitted work (including but not limited to grants, data monitoring board, study design, manuscript preparation, statistical analysis, etc.)?

Are there any relevant conflicts of interest?  Yes  No

### Section 3. Relevant financial activities outside the submitted work.

Place a check in the appropriate boxes in the table to indicate whether you have financial relationships (regardless of amount of compensation) with entities as described in the instructions. Use one line for each entity; add as many lines as you need by clicking the "Add +" box. You should report relationships that were **present during the 36 months prior to publication**.

Are there any relevant conflicts of interest?  Yes  No

### Section 4. Intellectual Property -- Patents & Copyrights

Do you have any patents, whether planned, pending or issued, broadly relevant to the work?  Yes  No

## ICMJE Form for Disclosure of Potential Conflicts of Interest

---

### Section 5. Relationships not covered above

Are there other relationships or activities that readers could perceive to have influenced, or that give the appearance of potentially influencing, what you wrote in the submitted work?

- Yes, the following relationships/conditions/circumstances are present (explain below):
- No other relationships/conditions/circumstances that present a potential conflict of interest

At the time of manuscript acceptance, journals will ask authors to confirm and, if necessary, update their disclosure statements. On occasion, journals may ask authors to disclose further information about reported relationships.

### Section 6. Disclosure Statement

Based on the above disclosures, this form will automatically generate a disclosure statement, which will appear in the box below.

Dr. Ramos has nothing to disclose.

### Evaluation and Feedback

Please visit <http://www.icmje.org/cgi-bin/feedback> to provide feedback on your experience with completing this form.

## ICMJE Form for Disclosure of Potential Conflicts of Interest

### Instructions

The purpose of this form is to provide readers of your manuscript with information about your other interests that could influence how they receive and understand your work. The form is designed to be completed electronically and stored electronically. It contains programming that allows appropriate data display. Each author should submit a separate form and is responsible for the accuracy and completeness of the submitted information. The form is in six parts.

#### 1. Identifying information.

#### 2. The work under consideration for publication.

This section asks for information about the work that you have submitted for publication. The time frame for this reporting is that of the work itself, from the initial conception and planning to the present. The requested information is about resources that you received, either directly or indirectly (via your institution), to enable you to complete the work. Checking "No" means that you did the work without receiving any financial support from any third party -- that is, the work was supported by funds from the same institution that pays your salary and that institution did not receive third-party funds with which to pay you. If you or your institution received funds from a third party to support the work, such as a government granting agency, charitable foundation or commercial sponsor, check "Yes".

#### 3. Relevant financial activities outside the submitted work.

This section asks about your financial relationships with entities in the bio-medical arena that could be perceived to influence, or that give the appearance of potentially influencing, what you wrote in the submitted work. You should disclose interactions with ANY entity that could be considered broadly relevant to the work. For example, if your article is about testing an epidermal growth factor receptor (EGFR) antagonist in lung cancer, you should report all associations with entities pursuing diagnostic or therapeutic strategies in cancer in general, not just in the area of EGFR or lung cancer.

Report all sources of revenue paid (or promised to be paid) directly to you or your institution on your behalf over the 36 months prior to submission of the work. This should include all monies from sources with relevance to the submitted work, not just monies from the entity that sponsored the research. Please note that your interactions with the work's sponsor that are outside the submitted work should also be listed here. If there is any question, it is usually better to disclose a relationship than not to do so.

For grants you have received for work outside the submitted work, you should disclose support ONLY from entities that could be perceived to be affected financially by the published work, such as drug companies, or foundations supported by entities that could be perceived to have a financial stake in the outcome. Public funding sources, such as government agencies, charitable foundations or academic institutions, need not be disclosed. For example, if a government agency sponsored a study in which you have been involved and drugs were provided by a pharmaceutical company, you need only list the pharmaceutical company.

#### 4. Intellectual Property.

This section asks about patents and copyrights, whether pending, issued, licensed and/or receiving royalties.

#### 5. Relationships not covered above.

Use this section to report other relationships or activities that readers could perceive to have influenced, or that give the appearance of potentially influencing, what you wrote in the submitted work.

#### Definitions.

**Entity:** government agency, foundation, commercial sponsor, academic institution, etc.

**Grant:** A grant from an entity, generally [but not always] paid to your organization

**Personal Fees:** Monies paid to you for services rendered, generally honoraria, royalties, or fees for consulting, lectures, speakers bureaus, expert testimony, employment, or other affiliations

**Non-Financial Support:** Examples include drugs/equipment supplied by the entity, travel paid by the entity, writing assistance, administrative support, etc.

**Other:** Anything not covered under the previous three boxes

**Pending:** The patent has been filed but not issued

**Issued:** The patent has been issued by the agency

**Licensed:** The patent has been licensed to an entity, whether earning royalties or not

**Royalties:** Funds are coming in to you or your institution due to your patent

## ICMJE Form for Disclosure of Potential Conflicts of Interest

### Section 1. Identifying Information

1. Given Name (First Name)

Juan

2. Surname (Last Name)

Alvarez Sevillano

3. Date

28-July-2017

4. Are you the corresponding author?

Yes

No

Corresponding Author's Name

Manuel Estigarribia

5. Manuscript Title

Tratamiento de la disfunción de homoinjerto  
aórtico en paciente joven mediante el implante

6. Manuscript Identifying Number (if you know it)

### Section 2. The Work Under Consideration for Publication

Did you or your institution **at any time** receive payment or services from a third party (government, commercial, private foundation, etc.) for any aspect of the submitted work (including but not limited to grants, data monitoring board, study design, manuscript preparation, statistical analysis, etc.)?

Are there any relevant conflicts of interest?

Yes

No

### Section 3. Relevant financial activities outside the submitted work.

Place a check in the appropriate boxes in the table to indicate whether you have financial relationships (regardless of amount of compensation) with entities as described in the instructions. Use one line for each entity; add as many lines as you need by clicking the "Add +" box. You should report relationships that were **present during the 36 months prior to publication**.

Are there any relevant conflicts of interest?

Yes

No

### Section 4. Intellectual Property -- Patents & Copyrights

Do you have any patents, whether planned, pending or issued, broadly relevant to the work?

Yes

No

## ICMJE Form for Disclosure of Potential Conflicts of Interest

---

### Section 5. Relationships not covered above

Are there other relationships or activities that readers could perceive to have influenced, or that give the appearance of potentially influencing, what you wrote in the submitted work?

- Yes, the following relationships/conditions/circumstances are present (explain below):
- No other relationships/conditions/circumstances that present a potential conflict of interest

At the time of manuscript acceptance, journals will ask authors to confirm and, if necessary, update their disclosure statements. On occasion, journals may ask authors to disclose further information about reported relationships.

### Section 6. Disclosure Statement

Based on the above disclosures, this form will automatically generate a disclosure statement, which will appear in the box below.

Dr. Alvarez Sevillano has nothing to disclose.

### Evaluation and Feedback

Please visit <http://www.icmje.org/cgi-bin/feedback> to provide feedback on your experience with completing this form.

## ICMJE Form for Disclosure of Potential Conflicts of Interest

### Instructions

The purpose of this form is to provide readers of your manuscript with information about your other interests that could influence how they receive and understand your work. The form is designed to be completed electronically and stored electronically. It contains programming that allows appropriate data display. Each author should submit a separate form and is responsible for the accuracy and completeness of the submitted information. The form is in six parts.

#### 1. Identifying information.

#### 2. The work under consideration for publication.

This section asks for information about the work that you have submitted for publication. The time frame for this reporting is that of the work itself, from the initial conception and planning to the present. The requested information is about resources that you received, either directly or indirectly (via your institution), to enable you to complete the work. Checking "No" means that you did the work without receiving any financial support from any third party -- that is, the work was supported by funds from the same institution that pays your salary and that institution did not receive third-party funds with which to pay you. If you or your institution received funds from a third party to support the work, such as a government granting agency, charitable foundation or commercial sponsor, check "Yes".

#### 3. Relevant financial activities outside the submitted work.

This section asks about your financial relationships with entities in the bio-medical arena that could be perceived to influence, or that give the appearance of potentially influencing, what you wrote in the submitted work. You should disclose interactions with ANY entity that could be considered broadly relevant to the work. For example, if your article is about testing an epidermal growth factor receptor (EGFR) antagonist in lung cancer, you should report all associations with entities pursuing diagnostic or therapeutic strategies in cancer in general, not just in the area of EGFR or lung cancer.

Report all sources of revenue paid (or promised to be paid) directly to you or your institution on your behalf over the 36 months prior to submission of the work. This should include all monies from sources with relevance to the submitted work, not just monies from the entity that sponsored the research. Please note that your interactions with the work's sponsor that are outside the submitted work should also be listed here. If there is any question, it is usually better to disclose a relationship than not to do so.

For grants you have received for work outside the submitted work, you should disclose support ONLY from entities that could be perceived to be affected financially by the published work, such as drug companies, or foundations supported by entities that could be perceived to have a financial stake in the outcome. Public funding sources, such as government agencies, charitable foundations or academic institutions, need not be disclosed. For example, if a government agency sponsored a study in which you have been involved and drugs were provided by a pharmaceutical company, you need only list the pharmaceutical company.

#### 4. Intellectual Property.

This section asks about patents and copyrights, whether pending, issued, licensed and/or receiving royalties.

#### 5. Relationships not covered above.

Use this section to report other relationships or activities that readers could perceive to have influenced, or that give the appearance of potentially influencing, what you wrote in the submitted work.

#### Definitions.

**Entity:** government agency, foundation, commercial sponsor, academic institution, etc.

**Grant:** A grant from an entity, generally [but not always] paid to your organization

**Personal Fees:** Monies paid to you for services rendered, generally honoraria, royalties, or fees for consulting, lectures, speakers bureaus, expert testimony, employment, or other affiliations

**Non-Financial Support:** Examples include drugs/equipment supplied by the entity, travel paid by the entity, writing assistance, administrative support, etc.

**Other:** Anything not covered under the previous three boxes

**Pending:** The patent has been filed but not issued

**Issued:** The patent has been issued by the agency

**Licensed:** The patent has been licensed to an entity, whether earning royalties or not

**Royalties:** Funds are coming in to you or your institution due to your patent

## ICMJE Form for Disclosure of Potential Conflicts of Interest

### Section 1. Identifying Information

1. Given Name (First Name) Mariela	2. Surname (Last Name) Toluso	3. Date 28-July-2017
4. Are you the corresponding author?	<input type="checkbox"/> Yes <input checked="" type="checkbox"/> No	Corresponding Author's Name Manuel Estigarribia
5. Manuscript Title Tratamiento de la disfunción de homoinjerto aórtico en paciente joven mediante el implante		
6. Manuscript Identifying Number (if you know it)		

### Section 2. The Work Under Consideration for Publication

Did you or your institution **at any time** receive payment or services from a third party (government, commercial, private foundation, etc.) for any aspect of the submitted work (including but not limited to grants, data monitoring board, study design, manuscript preparation, statistical analysis, etc.)?

Are there any relevant conflicts of interest?  Yes  No

### Section 3. Relevant financial activities outside the submitted work.

Place a check in the appropriate boxes in the table to indicate whether you have financial relationships (regardless of amount of compensation) with entities as described in the instructions. Use one line for each entity; add as many lines as you need by clicking the "Add +" box. You should report relationships that were **present during the 36 months prior to publication**.

Are there any relevant conflicts of interest?  Yes  No

### Section 4. Intellectual Property -- Patents & Copyrights

Do you have any patents, whether planned, pending or issued, broadly relevant to the work?  Yes  No

## ICMJE Form for Disclosure of Potential Conflicts of Interest

---

### Section 5. Relationships not covered above

Are there other relationships or activities that readers could perceive to have influenced, or that give the appearance of potentially influencing, what you wrote in the submitted work?

- Yes, the following relationships/conditions/circumstances are present (explain below):
- No other relationships/conditions/circumstances that present a potential conflict of interest

At the time of manuscript acceptance, journals will ask authors to confirm and, if necessary, update their disclosure statements. On occasion, journals may ask authors to disclose further information about reported relationships.

### Section 6. Disclosure Statement

Based on the above disclosures, this form will automatically generate a disclosure statement, which will appear in the box below.

Dr. Toluso has nothing to disclose.

### Evaluation and Feedback

Please visit <http://www.icmje.org/cgi-bin/feedback> to provide feedback on your experience with completing this form.